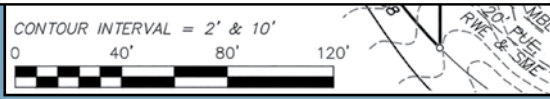
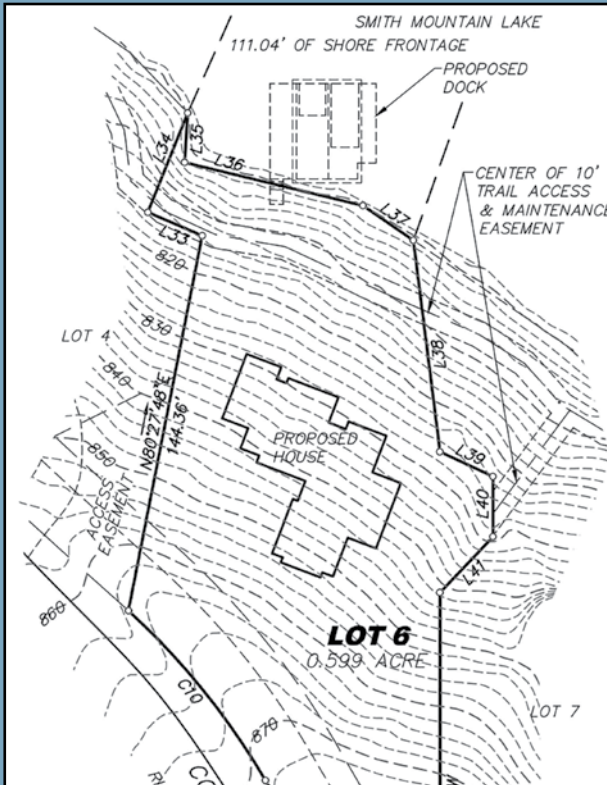


WELCOME TO THE COVES

LOT 6

Mountain Retreat Living
"Poplar Cove" DHP

Proposed Home Site Build



MAKE US YOUR NATURAL HABITAT



Explore the offerings of LOT 6 and decide if it might be right for you!



Life at the Coves provides:

- Historic Welcome Center
- World Class Performing Arts Venue
- 4+ Miles of Hiking & Biking trails
- Social & Water Sports Docks
- Open-air Pavilions & Fire Pits
- 5G Wi-Fi coverage
- SouthLake Spa Wellness Center
- Solar Arrays for reliable power
- 30+ Acres plus of Green Space
- Disk Golf Course (Opening 2023)

480 COVES ROAD LOT 6 MODEL

Rendering of residential construction in process

*Rendering is for consideration only. Actual specs may vary from those depicted

Contact us for a viewing.
www.covesatsml.com





THIS DESIGNER HOME AVAILABLE FOR 2022 OCCUPANCY

LOT 6 480 Coves Road Model Home



This waterfront home was designed specifically to capture the long water views. The open floor plan provides one level living with spacious Master Bedroom Suite, with additional finished bedrooms and living space in the walkout basement. A rear screened porch and ample deck space offers easy access to the lake and great spot for outdoor entertaining. Home features include: Pella windows, James Hardie siding, poplar bark shakes, timber frame accents, hardwood flooring, custom cabinetry, granite countertops, and a convenient U-Shaped driveway.



Optional 1500sf Dock Package (permit submitted)

The architectural drawings include a detailed floor plan showing a Family Room, Kitchenette, Mechanical & Storage Room, and two Bedrooms. It also features a 'FRONT ELEVATION' and a 'REAR ELEVATION' of the house, highlighting its gabled roof and timber frame accents. Interior renderings show a bright dining area, a living room with a stone fireplace, and a kitchen with a bar. A site plan at the bottom shows the house's location on a waterfront lot with a U-shaped driveway.

